

# MAPLE GARAGE BEAVER RALLY

**Beverley and District Motor Club Limited**  
**5th/6th October 2024**

## FINAL INSTRUCTIONS

Thank you for your entry, which we confirm has been accepted. Your start number is shown on the attached entry list, and your start time from MTC 1 is at 23.45 hours plus your start number.

There is pre-event fuel available in Pickering at Map Ref 799836 until 22.00.

If you are bringing your car on a trailer, please note the diagram below advising trailer parking area.

### START PROCEDURE

Noise will commence at 19:30 prior to Scrutineering at NY500, Pickering, Map Reference 100 / 802806 just off the A169. The sound test will **NOT** open until this time. Please view the map below for the correct procedure. The Environmental Scrutineer will provide you with a scrutineering sheet and damage declaration form at the sound test. This will enable the Scrutineer to mark any damage at the start of the event. Note that you will require your MOT certificate if applicable.

- a. Upon obtaining the Scrutineers' approval, please park in the area as per the diagram and proceed to Documentation inside the NY 500 Café building, taking with you the following:
  - Completed Scrutineering card
  - Competition licences for both driver and navigator (or application forms)
  - Valid club membership cards
- b. After signing on, you will be issued with your rally pack. (Numbers will be in your pack.) All competitors must be signed on by 21.45. Any competitor not signed on by this time may be excluded. The Café will be open to serve hot and cold food and drinks. There will be a competitors briefing at 22.00 in the Cafe. Hand Out 1 will be given out at MTC 0 from the Documentation Desk in the Cafe from 22.45 plus your Start Number. This will provide Route Information to plot before you are due at MTC 1.
- c. If anyone requires their competition licence signing, please leave it at signing on, accompanied by a stamped addressed envelope or alternatively you can get this signed at the finish once the results have been declared final.
- d. Please ensure you sign any championship registration forms as you sign on.

### 2. COMPETITORS ARE REMINDED OF THE FOLLOWING:

- a. Cars competing in rallies other than special stage rallies may not carry a radio-transmitting device (H 36). Mobile phones may be carried for use in an emergency only.
- b. In standard and regularity sections, you must stop before entering any road protected by a give way sign or any junction designated in the route instructions. In neutral or transport sections, the RLO approval has been given for you to treat these junctions in accordance with the Highway Code.

### 3. CONTROLS

Please refer to the regulations for the types of controls used on the event. Competitors are reminded

that the onus of ensuring that they receive the correct time rests with them (H 60 refers). This means you should ensure that marshals write the time on your card **VERY CLEARLY AND LEGIBLY**. The results team interpretation might be different to yours!

4. **ROUTE CHECKS**

Route checks will be in the form of car registration plates with not more than 5 black numbers or 5 black letters or a combination of both up to a maximum of 7, which are to be written on your Time Cards. The Time Cards and Route Instructions will indicate how many route checks there are on each section. A maximum of 2 wrong characters will be allowed without penalty providing it resembles the original code.

5. **QUIET ZONES**

All neutral and regularity sections from the Intermediate control will be designated a Quiet Zone. These will have a QUIET board at the start of the zone and an OK board at the end. The organisers may also place a quiet zone in a competitive section if deemed necessary to maintain public relations. Some particular PR sensitive areas will require you to be extra quiet and may be manned by a Driving Standards Observer and have a DSO board situated with the Quiet Board.

6. **POLICE**

You are reminded that the police may observe the event and may use speed guns. **PLEASE TAKE NOTE**. Last year we had no convictions, and I would like to keep it that way for future years.

7. **PUBLIC RELATIONS**

During the course of our public relations work the following points have been raised numerous times:

- a. Damage to crops/hedges without notification: damage is caused to crops by cars leaving the road and travelling across what might seem to be ploughed fields. Any competitor found to be travelling across agricultural land by a marshal, judge of fact or an official and not notifying the organisers will be excluded from the event.
- b. Competitor attitude: for example, not dipping headlights, not making room for other road users, making excessive noise, not reporting damage, etc.
- c. There are a lot of loose sheep on the North Yorkshire Moors. A couple of farmers have expressed concerns during PR work. 'They like to sleep on the tarmac sometimes!'

8. **PRESENTATION OF AWARDS**

The presentation of the awards will be held after the event at the finish venue assuming the results have been declared final.

9. **PETROL**

The petrol halt accepts the usual methods of payment. Please be aware that the fuel halt is after approximately 85 miles, where all grades of fuel will be available, along with toilet and shop facilities. Petrol will be available in Malton and Pickering before arriving at start venue.

10. **AMENDMENTS TO ASRs**

**Note** - The Stewards appointed for the 2024 Maple Garage Beaver Rally have changed, and will now be Andy Beaumont, Nick Toplis and, hopefully Martin Betts and/or Alex Green. TBC  
Mark Sherburn has been replaced by Steve Minns as part of the Scrutineering team.

11. **REGULARITY SECTIONS**

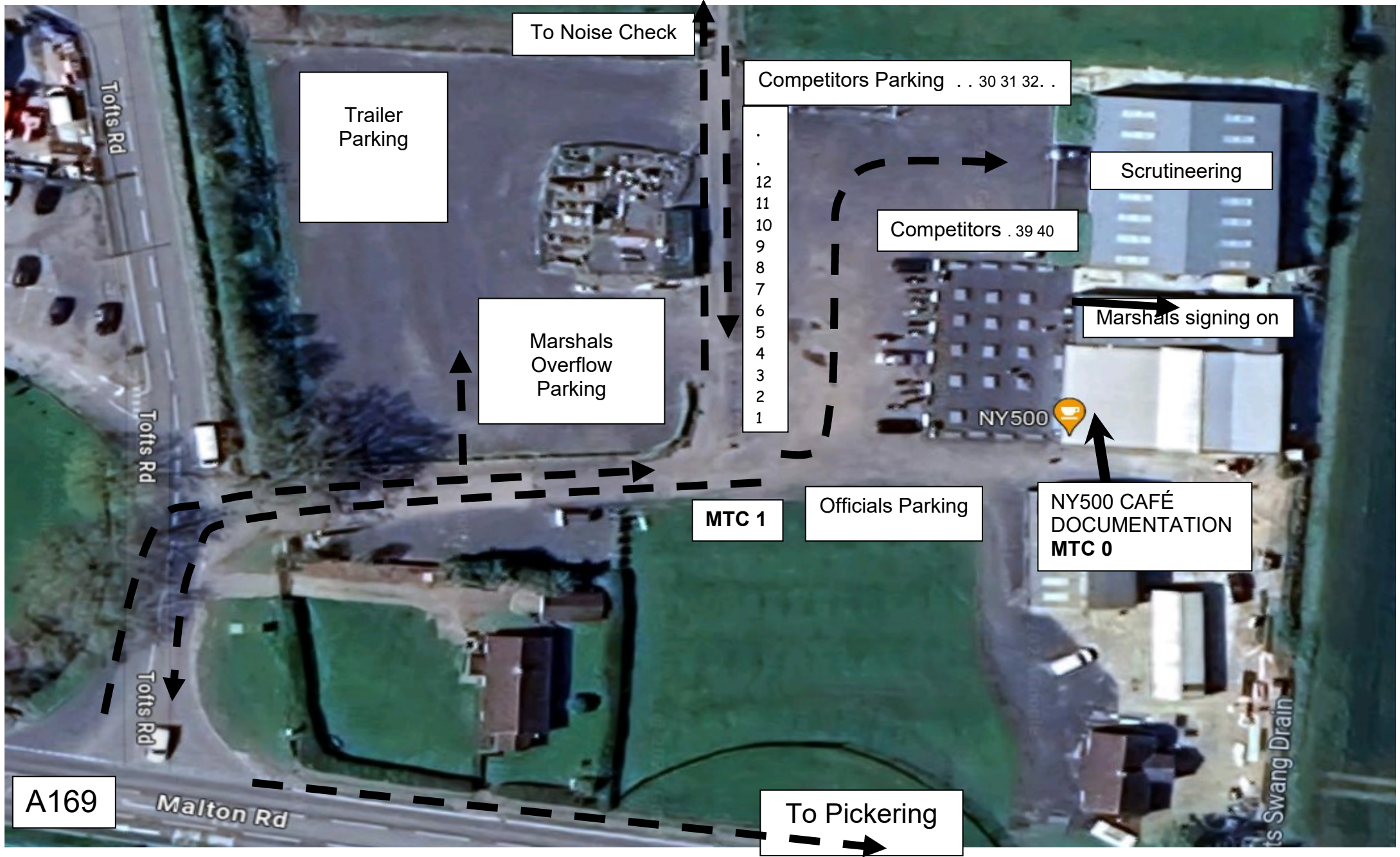
There will be Regularity Sections with Intermediate Regularity Time Controls (IRTC) timed to less than 1 minute, followed by a Regularity Time Control (RTC) timed to the minute.

12. **RESULTS**

For those with Internet access, the results will be posted on our web site during the event, starting after the petrol halt. Our web address is [www.bdmc.org.uk](http://www.bdmc.org.uk). Results will also be available to competitors at 2 locations during the night.

**The organisers trust that you will have an enjoyable night's sport and wish you all GOOD LUCK.**

**Should you require any further details, please do not hesitate to contact us.**



A169

To Noise Check

Trailer  
Parking

Marshals  
Overflow  
Parking

Competitors Parking . . 30 31 32 . .

.  
12  
11  
10  
9  
8  
7  
6  
5  
4  
3  
2  
1

Competitors . 39 40

Scrutineering

Marshals signing on

NY500

MTC 1

Officials Parking

NY500 CAFÉ  
DOCUMENTATION  
MTC 0

To Pickering