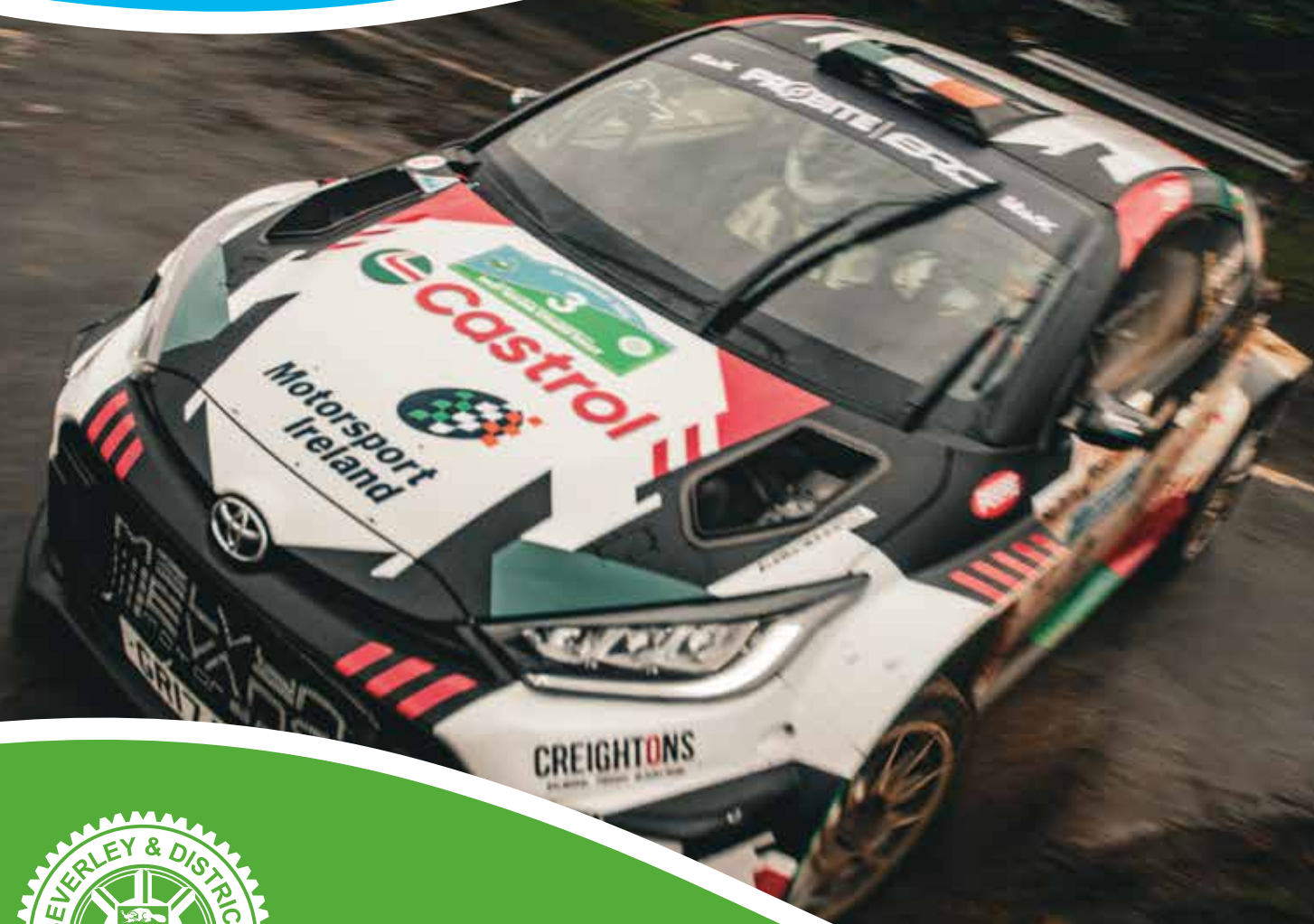


OUR SUSTAINABILITY POLICY



*Beverley & District
Motor Club Limited*

WWW.BDMC.ORG.UK/SUSTAINABILITY



Contents

Introduction	2
Environmental Benefits	2
Our Organisation	3
Our Environmental Impact	4
<i>12 Car Navigational Rallies</i>	5
<i>The Beaver Road Rally</i>	6
<i>The Beaver Road Rally</i>	7
<i>The East Riding Stages Rally (ERSR)</i>	8
<i>The East Riding Stages Rally (ERSR)</i>	8
<i>The East Riding Stages Rally (ERSR)</i>	10
<i>The East Riding Stages Rally (ERSR)</i>	11
Our Sustainability Vision	12
2026 Sustainability Communication Plan	13
<i>Why Communication Matters</i>	13
<i>Our Website</i>	13
<i>Social Media</i>	13
<i>Competitor and Volunteer Briefings</i>	13
<i>Community Engagement</i>	13
<i>On-Event Signage</i>	13
<i>Post-Event Communication</i>	13
2026 Environmental Sustainability Action Plan	14
<i>Preventing pollution and protecting local environments</i>	14
<i>Reducing waste and minimising resource consumption</i>	14
<i>Considering sustainability in supplier and sponsor choice</i>	15
<i>Reducing and mitigating greenhouse gas emissions</i>	15
<i>Compliance with Regulations</i>	16
<i>Engagement and Education</i>	16
<i>Monitoring and Review</i>	17
<i>Continuous Improvement</i>	17
Our Commitment to the Future	18



Introduction

Beverley and District Motor Club Limited (BDMC) has a proud history of providing motorsport opportunities in East Yorkshire, from grassroots navigational events, through to national-level closed road rallying. As a Club, we recognise that motorsport takes place within the communities and environments we value. We therefore have a responsibility to manage our impact and ensure that our sport not only survives, but thrives in a sustainable way for future generations.

Our events range from 12 Car Navigational Rallies (part of the Motorsport UK StreetCar programme), to the popular Beaver Road Rally, and the flagship East Riding Stages Rally (ERSR) - one of the UK's most highly regarded closed-road rallies. Each of these events brings different environmental considerations.

By working proactively with Motorsport UK, local authorities, residents, competitors, and volunteers, we aim to set an example of how a volunteer-led motorsport club can deliver high-quality events while caring for the environment.

This Sustainability Policy includes an Action Plan which sets out how BDMC will reduce our environmental impact, promote positive behaviours, and continually improve our performance.

We are committed to running motorsport events responsibly. Sustainability is central to protecting the future of our sport. Our approach is practical, achievable, and rooted in the reality of a volunteer club.

Environmental Benefits

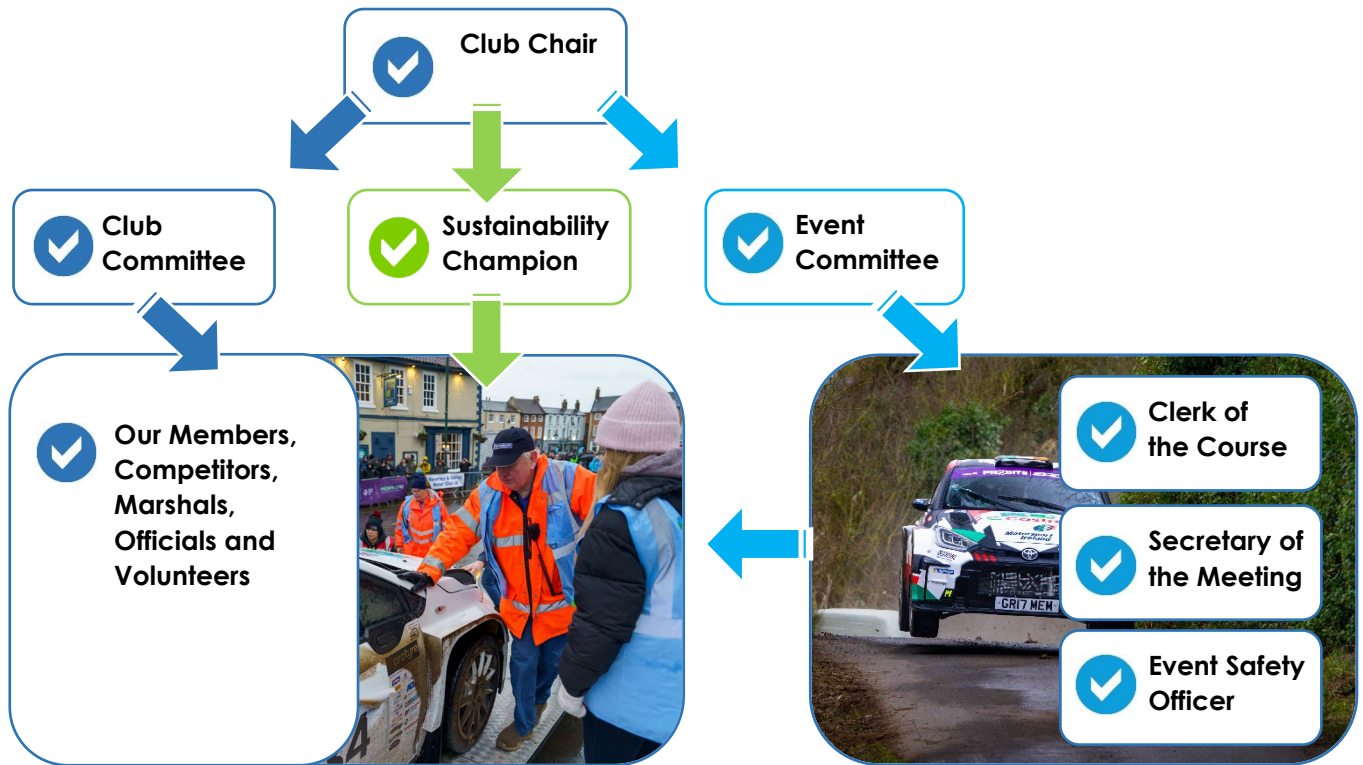
Motorsport generates passion, teamwork, and community spirit - and with the right practices in place, it can also generate environmental benefits. By embedding sustainability in our culture, the Club achieves the following benefits:

- ✔ Waste reduction through paperless entry systems, online bulletins, and reuse of equipment.
- ✔ Mitigation of unavoidable emissions from competition fuel usage, through our 200% offsetting scheme.
- ✔ Protection of our local environment through careful planning, strict compliance with Motorsport UK environmental rules, and sensitive engagement with residents.
- ✔ Improved image and trust with landowners, councils, and the wider public, reinforcing our reputation as professional and environmentally responsible.



Our Organisation

To deliver these commitments, the Club structure ensures that responsibility is shared, with sustainability embedded at every level of club and event management.



Club Chair: *Matthew Atkinson*
Provides top-level endorsement and ensures sustainability remains a standing agenda item at committee meetings.

Club and Event Committees
Approves and promotes the Club's Environmental Sustainability Policy

Sustainability Champion: *Cat Lund*
Creates and maintains the Environmental Sustainability Policy, prepares annual reports and leads sustainability training and communication.

Members, Competitors, Marshals, Officials and Volunteers
Play a vital role in implementation of the Environmental Action Plan.

Event-led Appointments:

Clerk of the Course
Implements sustainability policies, ensuring marshals and officials understand requirements.

Secretary of the Meeting
Oversees paperwork, ensuring digital-first systems and sustainable purchasing where possible.

Event Safety Officer
Implements the environmental action plans agreed for the event and reinforces compliance.



Our Environmental Impact

Each Club event has a different environmental footprint, reflecting the scale of the competition, the number of participants and spectators, and the logistics required.

We have considered each event type individually, to identify the key aspects, potential impacts, and the mitigation measures we put in place.

Event	What is it?	Impact?	Mitigation
12 Car Navigational Rallies	Small evening navigation events on public roads, run as grassroots motorsport	Low impact – mainly competitor and marshal fuel usage, plus some paper use	Partly digitised paperwork to reduce printing, short routes, restricted to 30mph average speed, MSUK compliance
The Beaver Rally	Long-standing BDMC Navigational Road Rally, run overnight in a remote location	Medium impact - Potential resident disturbance from noise, plus competitor fuel use and travel	Careful route planning to minimise disturbance, strict noise testing plus competitor driving guidance, 30mph average speed, MSUK compliance
The East Riding Stages Rally (ERSR)	BDMC's flagship closed-road stage rally based in Beverley in the East Riding	Largest impact – more competitors and marshals, therefore higher levels of fuel use, travel, and service area waste, plus more resident disturbance and inconvenience	Unavoidable emissions offset, recycling, reduced printing via digital noticeboard, reusable signage, strong community liaison and information provision, MSUK compliance



12 Car Navigational Rallies

Part of the StreetCar Initiative



What is a 12 Car Rally?

12 Car Navigational Rallies are designed to be low-cost and accessible. Timed at an average speed of 30mph, with navigational challenges to solve, these events have small entry numbers (12 or fewer) and are run on the public highway using everyday road cars.

They form part of Motorsport UK's StreetCar initiative, designed to encourage more people to get behind the wheel and enjoy the sport.

What impact do they have?

The overall environmental footprint is relatively small, but the potential impact includes paper usage, fuel consumption and low-level emissions from competing cars.

What mitigation measures are in place?



Carbon emissions and fuel usage are minimised through limited vehicle mileage and the mandated 30mph average speed



Reducing waste is simplified with no concentration of infrastructure to manage. Signage is minimal because Marshals use the same stakes and control boards for each event, and these are collected by each control marshal and returned for re-use.

crews are expected to work out the route from a set of instructions given and to plot it on their own re-usable map.

Regulations are online and we use online entries and signing-on for competitors and marshals. Results are given at the event in person and published online.

We still use paper time cards and handouts, but crews plot instructions on their own re-usable map, and we ask that any paperwork is recycled.

This event format requires very few resources while still providing a competitive and enjoyable form of motorsport. The environmental impact is considered to be low.



The Beaver Road Rally

What is the Beaver Road Rally?

The Beaver Road Rally is a larger-scale navigational road rally for up to 60 cars.

The rally takes place overnight, and has longer mileage than the 12 Car Navigational Rally series.

An important part of running the Beaver Road Rally is building trust with the communities along the route.



The Club engages with residents in advance, providing clear information about the route, timings, and expected traffic levels. This helps to address concerns and allows residents to plan around the rally.

After the rally, feedback from local communities is welcomed and reviewed as part of the event debrief, ensuring that any concerns are addressed and improvements are built into future planning. This open dialogue strengthens community support and reinforces BDMC's commitment to running the event responsibly.

What impact does it have?

The impact of the event is considered to be more noticeable, particularly in respect of greater noise levels. Additionally, the potential impact includes higher fuel consumption and emissions from competing cars.

What mitigation measures are in place?

The impact of the Beaver Road Rally is actively mitigated through the following measures:



Noise is carefully managed through mandatory noise tests, ensuring all competing vehicles meet Motorsport UK limits before starting. Competitors are briefed on respectful driving, quiet zones through residential areas, and responsible behaviour throughout the event to minimise disturbance, and officials are briefed to respond quickly to any issues raised on the night.

The route is carefully planned to avoid populated areas where possible, and managed in conjunction with residents, farmers and approved by Motorsport UK Route Liaison Officers, who work with clubs, competitors, police authorities and National Parks on every event using the Public Highway to minimise disruption and to ensure that the Road Traffic Act is enforced.



The Beaver Road Rally

- ✓ **Protection for the natural environment** is managed in line with the Motorsport UK National Competition Regulations (NCR's). This means all competitors on the Beaver Road Rally must carry a spill kit in their car, ensuring they can take immediate action to contain and clean up any spillage in the event of a fuel or oil leak.

The requirement reduces the risk of contamination to roads, drains, and surrounding land, and demonstrates that even at a grassroots level, environmental protection is taken seriously. Competitors are reminded of this obligation in the event regulations and at pre-start checks, and compliance is monitored by the organising team.

- ✓ **Carbon emissions and fuel usage** are managed through the mandated average speed of 30 mph, set in line with the Motorsport UK NCR's. This reduces fuel consumption, lowers emissions and minimises disturbance, providing a challenging motorsport experience while limiting the environmental footprint of the event.

- ✓ **Reducing waste** is simplified with no service area is required, as there is no concentration of waste or infrastructure to manage. As the Beaver Rally is a navigational event, signage is minimal, with Marshals using the same stakes and control boards as for the 12 Car Navigational Rallies, and these are collected by each control marshal and returned for re-use.

The Regulations are published online and we use online entries and signing on for competitors and marshals. Results are also published online. Crews use their own re-usable maps, but we still use paper time cards and handouts, asking that they are recycled post-event.

**This event format requires very few resources, but has a potential higher impact through noise.
The environmental impact is considered to be medium.**



The East Riding Stages Rally (ERSR)



What is the event?

The East Riding Stages Rally is BDMC's flagship closed-road rally. Since its debut in 2022, it has quickly established a reputation for fast, challenging stages and exceptional organisation, drawing widespread praise from competitors, spectators, and the wider motorsport community.

The event attracts a strong entry list featuring national-level crews, including leading championship contenders, while also providing opportunities for local competitors to test themselves against some of the best in the sport.

Spectator interest has grown year on year, with several thousand fans travelling to the East Riding of Yorkshire to enjoy the rally. Many of these visitors are drawn not only by the competition but also by the region itself, bringing a welcome boost to the local economy through tourism, hospitality, and accommodation. The rally therefore provides benefits well beyond motorsport, acting as a showcase for the East Riding as a visitor destination.

The format of the event features a series of competitive special stages held on fully closed public roads, supported by a large service area and a large network of officials and volunteers. Planning and delivery are carried out in close partnership with the East Riding of Yorkshire Council, the emergency services, and Motorsport UK, ensuring that the rally is safe, compliant, and professionally managed at every level.

The East Riding Stages Rally is recognised not only as a showcase for rallying in the UK, but also as an example of how a motorsport event can work positively with its host community to deliver economic, social, and environmental value.

The East Riding Stages Rally (ERSR)

What impact does it have?

Due to its scale, the East Riding Stages Rally has a significant environmental footprint. The main impact includes fuel consumption and emissions from competing cars and service vehicles, waste generation within the service area and by spectators, potential wear and tear on roadside verges, and short-term disruption for residents living along the route.

The event also generates increased traffic movements through the arrival of spectators, officials and competitors. While these impacts are temporary, they must be carefully managed to ensure the event remains sustainable and retains the support of local communities.

What mitigation measures are in place?

BDMC has developed a programme of measures to manage and reduce the environmental impact of the East Riding Stages Rally. The following measures incorporate sustainability into the planning and delivery of the event.

- ✔ **Regulatory compliance** is achieved through the Motorsport UK National Competition Regulations (NCR's). Every competing car must comply with Motorsport UK requirements, including carrying a spill kit to deal with fuel or oil leaks, fitting mud flaps to reduce the dispersal of gravel and debris (even on asphalt surfaces), and adhering to strict tyre regulations to limit road damage. Noise tests are carried out to make sure all vehicles operate within permitted limits.
- ✔ **Route planning** is undertaken in close consultation with East Riding Council, parish councils, and the police. Sensitive areas, such as wildlife habitats or vulnerable road surfaces, are avoided. Timings are set to balance competitor needs with minimising inconvenience to residents, and considerable advance liaison takes place to ensure communities are well informed prior to the event.
- ✔ **Protection for the natural environment and service area waste and recycling systems** are implemented for competitors and their service crews. They are provided with comprehensive service area instructions as part of the event documentation. These instructions cover environmental responsibilities in detail, including the correct use of waste and recycling facilities, the requirement to use ground sheets and spill trays when working on vehicles, and the proper storage and disposal of oils, tyres, and other consumables.

The service area is equipped with clearly marked bins for recycling, general waste, and oils and compliance is checked during the event with clear signage and marshal supervision reinforcing these requirements on site. Teams are reminded that failure to comply may result in penalties.

By setting these expectations in advance and monitoring compliance during the rally, BDMC ensures that the service area operates to a high standard of environmental responsibility, reducing the risk of pollution and minimising waste.





The East Riding Stages Rally (ERSR)

- ✔ **Suppliers and partners are expected to share responsibility for sustainability** and we expect them to reflect the same values that guide our events. Catering partners are encouraged to avoid single-use plastics and to use biodegradable or recyclable packaging wherever possible. We also ask them to minimise food waste by offering realistic portion sizes and to separate recyclable materials for collection at the end of the day.

Beyond catering, all suppliers are asked to support our environmental objectives. Event signage is produced on recyclable materials and reused year after year, avoiding unnecessary replacement. Where printed materials are required, recycled paper and eco-friendly inks are specified, and digital alternatives are used whenever practical. Contractors working with the club are expected to minimise transport miles, reduce packaging, and operate responsibly on-site. We favour local businesses where possible, which both supports the East Riding economy and reduces the carbon footprint of deliveries and services.

By setting clear expectations for our suppliers, BDMC ensures that sustainability is integrated across every stage of the event supply chain. This approach not only reduces waste and resource use but also demonstrates to competitors, volunteers, and spectators that environmental responsibility is central to the way the club operates.

- ✔ **Post-event clean-up and remediation** is undertaken during the event and on the day after the rally. BDMC organises a full litter pick along the route, in the service area, and in spectator zones. Verges, fences, and farmland are inspected for any damage. If repairs are needed, they are carried out quickly in agreement with landowners or the council. This commitment ensures that the environment is restored promptly and relationships with the local community remain strong.
- ✔ **Spectator management** is thought through carefully, and where possible, designated car parks and viewing areas are provided to prevent uncontrolled parking and damage to verges or farmland. Information on car sharing, public transport, and sustainable travel is provided in advance. Spectator areas are monitored to manage waste, keep access routes clear, and maintain safety as well as environmental standards.



The East Riding Stages Rally (ERSR)

- ✔ **Emissions reduction and offsetting** play a key part in mitigating the event's environmental impact. The Club recognises that fuel use is the ERSR's biggest source of carbon emissions and we offset the unavoidable emissions generated by fuel usage. We do this via Carbon Positive Motorsport, the UK's leading carbon offsetting provider for motorsport.

Our competitor fuel use is calculated using Carbon Positive Motorsport's proven methodology and recorded on Motorsport UK's carbon calculator. It is offset using a 200% model to ensure the rally is not only carbon neutral but actively climate positive.

This means that for every tonne of CO₂e generated from fuel usage, one tonne is offset immediately through Carbon Reduction Units (CRU's), and an additional tonne is secured with Pending Issuance Units (PIUs) from UK rewilding projects. CRU's are independently verified carbon that has already been captured, and PIU's represent carbon that will be captured in the future as habitats are restored.

- ✔ **Continuous improvement** is woven into the culture of our Club and sustainability is included as part of the official post-event debrief. Feedback from competitors, residents, and officials is gathered to identify improvements for future years. This process ensures that lessons are acted upon and that environmental performance improves year on year.

Together, these measures mean that while the East Riding Stages Rally is one of the largest sporting events in the region, its environmental impact is actively managed and minimised. BDMC takes pride in showing that a high-profile motorsport event can be delivered responsibly and with sustainability at its core.

This event requires considerable resources, but is closely monitored and managed with robust mitigation measures. However, the environmental impact is considered to be high.



Our Sustainability Vision

We aim to run all our events with minimal environmental impact, be recognised as a regional leader in sustainable motorsport, and have embedded sustainability into the culture of our membership.

Beverley and District Motor Club Limited has signed the Motorsport UK Sustainable Rally Charter, agreeing to take action and demonstrate sustainable behaviour.

We are committed to:

- Preventing pollution and protecting the local environments impacted by our activities
- Reducing waste and minimising resource consumption
- Reducing and mitigating our greenhouse gas emissions
- Supporting biodiversity and ecological restoration through offsetting and rewilding initiatives.
- Complying with all Motorsport UK and environmental legislation.
- Considering sustainability in supplier and sponsor choices.
- Educating and supporting members, competitors, marshals, officials and volunteers to make sustainable decisions and demonstrate responsible environmental behaviours.
- Continuously improving our environmental performance through monitoring and review of our environmental impact and adopting innovation.

This policy is reviewed annually, signed by the Club Chair, and communicated to all members, competitors, and stakeholders.

Signed

A handwritten signature in blue ink that reads 'M. Atkinson'.

Matthew Atkinson

Club Chair

A handwritten signature in blue ink that reads 'Cat Lund'.

Cat Lund

Sustainability Champion

We are working towards delivering events with minimum environmental impact. We aim to lead sustainable motorsport in our region, and to embed sustainability into our club and everything we do.



2026 Sustainability Communication Plan

Why Communication Matters

The Club understands that communication is central to making sustainability work. It is not enough to set policies and targets; they need to be understood and acted upon by our members, competitors, volunteers, spectators, and the local community. Clear, practical information builds trust, reduces misunderstandings, and ensures that everyone involved in our events plays their part in protecting the environment.

Our Website

The Club uses the news section of the website to share key sustainability information, including reporting on carbon offsetting and our use of recyclable signage. For 2026 this will be developed into a dedicated sustainability area, with guidance for each event.

Social Media

On Facebook and Instagram, sustainability is incorporated as part of our event promotion. We will continue to embed sustainability in our posts, including information and reminders about recycling and offsetting, and we will expand this to include more practical advice such as encouraging car sharing for officials and giving spectators clear travel options.

Competitor and Volunteer Briefings

We include environmental reminders in our digital briefing packs and pre-event documentation, covering environmental responsibilities, waste management and respectful behaviour in local communities. For ERSR, the service area instructions provide clear, enforceable standards, and we will expand these for 2026 to include our improved recycling facilities and ensure service crews understand exactly how to use them.

Community Engagement

Parish Councils and Residents along rally routes receive advance letters explaining what will happen and what measures are in place to minimise disruption. Additionally, for ERSR we provide a road restriction information leaflet to the wider community which includes our sustainability policy and provides contact details for questions or feedback. This ongoing dialogue helps us to build good relationships and maintain local support.

On-Event Signage

At the ERSR, QR codes are used to provide digital access to spectator information and for 2026 this will include sustainability guidance and to direct people towards recycling points. From 2026 onwards, we will increase the number of recycling stations in the service area and introduce clearer signage so crews, service teams, and spectators know exactly how to separate waste correctly.

Post-Event Communication

After ERSR 2026, we will publish a short sustainability summary on our website and social channels, demonstrating that our commitments are real and measurable.



2026 Environmental Sustainability Action Plan

Our action plan focuses on practical steps that are achievable for a volunteer motor club, while still delivering meaningful impact, in line with our sustainability vision

Preventing pollution and protecting local environments

Protecting the environment is built into the way we run our events, and it will always remain a priority. We maintain full compliance with Motorsport UK's requirements for noise testing and competitor spill kits at every event. At ERSR, the service area is equipped with spill containment and ground protection, with regular checks carried out throughout the day to ensure standards are upheld.

Post-event litter picking and site care are standard practice across all BDMC events. We also work closely with East Riding Council, landowners, and parish councils to monitor and repair any damage to verges, fences, or farmland caused by event activity, helping us leave a positive relationship with our local communities.

We prevent pollution by meeting Motorsport UK standards to protect our local environments.

Reducing waste and minimising resource consumption

At ERSR, recycling in the service area will be expanded in 2026, with more recycling bins, clearer signage and better instructions. Across all events, paper use is kept to a minimum through online entries, signing-on, and bulletins. Where printing is unavoidable, we already use FSC-certified recycled paper, and we are issuing new guidance for recycling.

Signage is produced with recyclable inks and materials and reused year after year, and we expect our suppliers and contractors to minimise waste and packaging. Catering partners are encouraged to avoid single-use plastics and to use recyclable or biodegradable packaging wherever possible.

Our aim is to achieve measurable reductions in waste compared to 2024 baselines, even as our events grow.

We reduce waste by replacing paper with digital, reusing signage, and implementing better recycling practices.



Considering sustainability in supplier and sponsor choice

Suppliers and partners play a key role in reducing our impact, but we recognise we cannot control every decision they make. We set clear expectations, encouraging catering providers to avoid single-use plastics and to use recyclable or biodegradable packaging.

Where possible we prioritise local businesses to reduce transport distances, and we specify signage and event materials that can be reused or recycled. Our aim is to keep improving these standards each year, so that sustainability is built into the choices we make together.

We work with local suppliers and use materials that can be reused or recycled.

Reducing and mitigating greenhouse gas emissions

ERSR remains our biggest focus for reducing and mitigating emissions. Competitor fuel use is calculated using Carbon Positive Motorsport's methodology and recorded on the Motorsport UK carbon calculator. Emissions are offset at 200 percent through a combination of overseas Carbon Reduction Units and UK-based Pending Issuance Units, making the event climate positive. Pending Issuance Units also support biodiversity and ecological restoration through accredited UK rewilding projects.

Alongside offsetting, we keep working to reduce emissions at source. We encourage car sharing for officials, reducing fuel use, and we conduct planning meetings online. Since 2024, we have gathered travel data for ERSR through competitor and official feedback, helping us build a clearer picture of travel patterns and monitor reductions year on year.

We offset our unavoidable ERSR emissions and cut travel with car sharing and online meetings.



Compliance with Regulations

BDMC is committed to running every event responsibly. Each one conforms to Motorsport UK regulations and meets the appropriate environmental legislation and the requirements of local authorities and statutory bodies. Each event is planned with permits, risk assessments, and environmental management measures in place before it runs, and compliance checks are carried out during and after to confirm standards are met.

Any issues are logged, corrective actions are taken, and outcomes are reviewed at committee level. This process ensures our events meet the highest standards, protect the environment, and demonstrate that sustainable motorsport is achievable at club level. This approach gives confidence that our events are run responsibly and to the highest standards.

We meet Motorsport UK regulations and comply with environmental law at every event.

Engagement and Education

Educating and supporting our members, competitors, marshals, officials, and volunteers to make sustainable choices is central to our approach. Environmental reminders are included in briefings and event documentation, and recycling is actively promoted.

Community engagement is key, especially in respect of ERSR. The Club communicates with residents along rally routes in advance of events, and works closely with East Riding Council. Looking ahead, we aim to strengthen links with schools and community groups, using ERSR to promote the positive role of motorsport and increase wider environmental awareness.

We raise awareness through briefings, resident liaison, and community partnerships.



Monitoring and Review

We will publish an annual sustainability summary on our website, providing transparency, allowing progress to be measured, and enabling our community to hold us accountable.

Carbon emissions from fuel usage for the ERSR are measured as standard practice. Our reporting shows total emissions, details of offsets purchased, and confirmation that every litre of competitor fuel has been covered by both Carbon Reduction Units and Pending Issuance Units.

From 2026, waste volumes from the ERSR service areas will be recorded and compared year on year, with reductions reported annually. Paper use is monitored through printing and stationery costs, highlighting the savings achieved through digitisation.

Governance underpins this approach. The BDMC committee and Sustainability Champion review our Environmental Sustainability Policy annually to ensure it remains a living commitment rather than a static document.

We stay accountable by publishing annual results on our environmental progress.

Continuous Improvement

BDMC follows a Plan, Do, Check, Act cycle to drive improvement. After each event we hold a debrief that includes sustainability, with actions recorded, assigned, and carried forward into the next year's plan. Regulations, service area instructions, marshal briefings, signage and QR information are updated where needed.

At ERSR, progress is measured using carbon data collected through Carbon Positive Motorsport and the Motorsport UK calculator, as well as competitor and resident feedback. Post-event litter picking and repairs to verges, fences or farmland are reviewed carefully, and lessons learned are built into future arrangements, helping us reduce environmental impact year on year.

We recognise that sustainability is an ongoing journey. By continually improving, we will maintain the trust of our community and help ensure the long-term future of rallying. Our process keeps improvements practical and continuous and maintains the trust of competitors, volunteers, residents and partners.

We keep improving by learning from every event and acting on what we find.



Our Commitment to the Future

Beverley and District Motor Club recognises that the future of rallying depends on more than just delivering exciting competition. The Club is proud of the progress we have already made in embedding sustainability into our events, but we know that this is only the beginning.

We believe sustainable motorsport is achievable at club level. Our commitment is to keep learning, adapting, and finding practical ways to do better, proving that even as a volunteer organisation we can lead by example.

By setting clear goals and holding ourselves accountable, we aim to keep reducing our environmental impact year by year. From carbon measurement and offsetting, to improving recycling and working closely with our local communities, every step we take helps to protect both the sport we love and the places where it is run.

By continuing to measure, improve, and share our progress, Beverley and District Motor Club will safeguard the environments we rely on, strengthen relationships with our communities, and help set a positive example for the sport across the region.

By working together with our members, competitors, partners, and local residents, we will continue to show that motorsport has a positive future – one that balances passion for rallying with responsibility for the environment.

We believe sustainable motorsport is achievable at club level and that motorsport has a positive future.

BE THE CHANGE

HERE'S HOW YOU CAN HELP TO MAKE OUR SPORT MORE SUSTAINABLE

SPILLAGES



CARRY DRIP TRAYS,
MATTING AND
SPILL KITS

TRAVEL



POOL EVENT TRAVEL
AND CONSIDER LOCAL
SUSTAINABLE HOTELS

RECYCLE



USE RECYCLING FACILITIES
AT VENUES AND NEAR
HOME IF POSSIBLE

EDUCATION



REVIEW MOTORSPORT
UK POLICY AND
TRAINING

To find about more about sustainability in motorsport scan the QR code
<https://www.motorsportuk.org/about-us/environmental-sustainability/>

